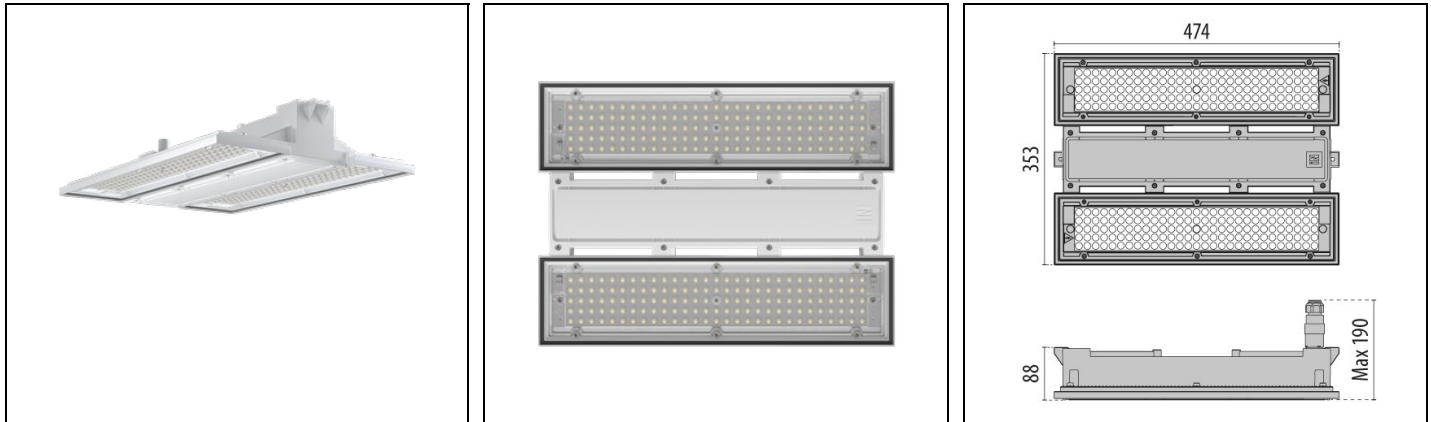


# LAMA+ 150

Part number LTH3154AH857



## Description

Suspended LED fixture for industrial lighting, for indoor use, consisting of:

- Die-cast aluminium housing, polyester powder coat finish ISO 9227/12944 - ISO 9223 (C5)
- UV and heat stabilised, technopolymer diffuser with integral custom moulded optics
- High-transparency polycarbonate optics
- S/W optic with UGR<25
- EPDM sealing gasket
- Technopolymer cable compartment cover
- Stainless steel suspension hook designed to be mounted on the fixture body quickly and without the use of tools to optimize installation time
- The IP66-rated socket-plug fast connector for mains connection without opening the luminaire. Made in PA66 with silver-plated brass contacts for cables Ø 9 - Ø 12 mm
- Stainless steel locking hardware
- The protective glass, available as accessory, shall be used in environments with mineral or natural oils or in atmospheres that are not compatible with polycarbonate
- Openable and maintainable luminaire (future-proof)
- The SOFT versions feature diffuser optics
- Appliance certified in accordance with the DIN 18032-2 standard, therefore suitable for installation in fitness centres or indoor sports structures
- Installation in gyms or sports facilities must be carried out using the mounting bracket or, if the fixtures must be suspended, using the specific carabiners. All these fastening elements are available as accessories
- Design by ROBERTO FIORATO

To maintain the regular updating of our products, PERFORMANCE iN LIGHTING reserves the right to make changes without prior notice. For the most up to date information we always recommend you read the latest version published on the website [www.performanceinlighting.com](http://www.performanceinlighting.com). Delivered luminaire lumen outputs and power consumptions, including losses, are subject to a tolerance of +/- 7%, and unless otherwise stated the values apply to an ambient temperature of 25°C. Terms of warranty are available at <https://www.performanceinlighting.com/qr/company/led-warranty>

Product data

|             |          |             |          |
|-------------|----------|-------------|----------|
| ETIM Group: | EG000027 | ETIM Class: | EC001716 |
|-------------|----------|-------------|----------|

General information

|                                    |                          |                              |       |
|------------------------------------|--------------------------|------------------------------|-------|
| Lampholder:                        | LED                      | Light source:                | LED   |
| Lightsource lumen output [lm]:     | 28224                    | Luminaire lumen output [lm]: | 23550 |
| Luminaire wattage [W]:             | 138 W                    | Luminous efficacy [lm/W]:    | 171   |
| CRI:                               | 80                       | Colour temperature [K]:      | 5700  |
| Colour / Finishing:                | WH-87 / White / Textured | IP degree of protection:     | IP66  |
| Impact resistance / impact energy: | IK07 2.6J xx5            | Protection class:            | I     |
| Optic:                             | S/W - Symmetric Wide     | Net weight [kg]:             | 4.17  |
| Overall length [mm]:               | 475                      | Overall width [mm]:          | 353   |
| Overall height [mm]:               | 116                      |                              |       |

Mechanical features

|                    |             |                      |           |
|--------------------|-------------|----------------------|-----------|
| Shape:             | Rectangular | Housing material:    | Aluminium |
| Diffuser material: | Plastic     | Glow wire test [°C]: | 750 °C    |

Electrical features

|                                       |          |                                 |          |
|---------------------------------------|----------|---------------------------------|----------|
| Voltage type:                         | AC/DC    | Input voltage [V AC]:           | 198-264  |
| Input frequency [Hz]:                 | 50/60    | Power factor / COS Φ:           | 0.97     |
| Input voltage [V DC]:                 | 176-276  | Surge protection   Common [kV]: | 4.000000 |
| Surge protection   Differential [kV]: | 4.000000 | Inrush current [A/μs]:          | 5 / 2500 |
| C10 1.5 mm²:                          | 16       | C16 2.5 mm²:                    | 27       |
| B10 1.5 mm²:                          | 10       | B16 2.5 mm²:                    | 16       |

Installation

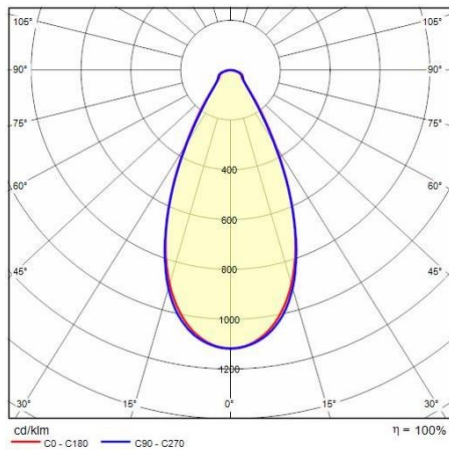
|                                |        |                                |                      |
|--------------------------------|--------|--------------------------------|----------------------|
| Application area:              | Indoor | Mounting type:                 | High bay and low bay |
| Min. ambient temperature [°C]: | -40    | Max. ambient temperature [°C]: | 60                   |

Light features

|                                 |        |                    |                |
|---------------------------------|--------|--------------------|----------------|
| MacAdam:                        | 3      | Lumen maintenance: | L80B10@170000h |
| Distribution of light emission: | Direct |                    |                |

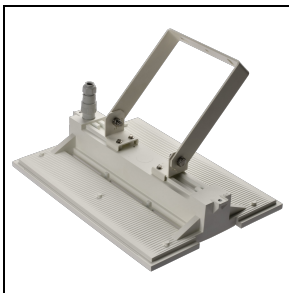
To maintain the regular updating of our products, PERFORMANCE iN LIGHTING reserves the right to make changes without prior notice. For the most up to date information we always recommend you read the latest version published on the website [www.performanceinlighting.com](http://www.performanceinlighting.com). Delivered luminaire lumen outputs and power consumptions, including losses, are subject to a tolerance of +/- 7%, and unless otherwise stated the values apply to an ambient temperature of 25°C. Terms of warranty are available at <https://www.performanceinlighting.com/qr/company/led-warranty>

### Photometric data



## Optional accessories

## LAMA+



## LTH3A2015

LAMA+ wall/ceiling bracket kit

☐ WH-87 / White



## LTH3A2053

Stainless steel spring carabiner kit (2 pcs.)

INOX / Stainless steel



## LTH3A5033

Transparent protective glass IK 10

☐ WH-87 / White

To maintain the regular updating of our products, PERFORMANCE IN LIGHTING reserves the right to make changes without prior notice. For the most up to date information we always recommend you read the latest version published on the website [www.performanceinlighting.com](http://www.performanceinlighting.com). Delivered luminaire lumen outputs and power consumptions, including losses, are subject to a tolerance of  $\pm 7\%$ , and unless otherwise stated the values apply to an ambient temperature of 25°C. Terms of warranty are available at <https://www.performanceinlighting.com/gr/company/led-warranty>

For information:  
**PERFORMANCE IN LIGHTING S.p.A. Headquarters - Italy**  
 Viale del Lavoro 9/11  
 37030 Colognola ai Colli Verona - Italy  
 Tel. +39 045 61 59 211

**info.it@pil.lighting**  
www.performanceinlighting.com